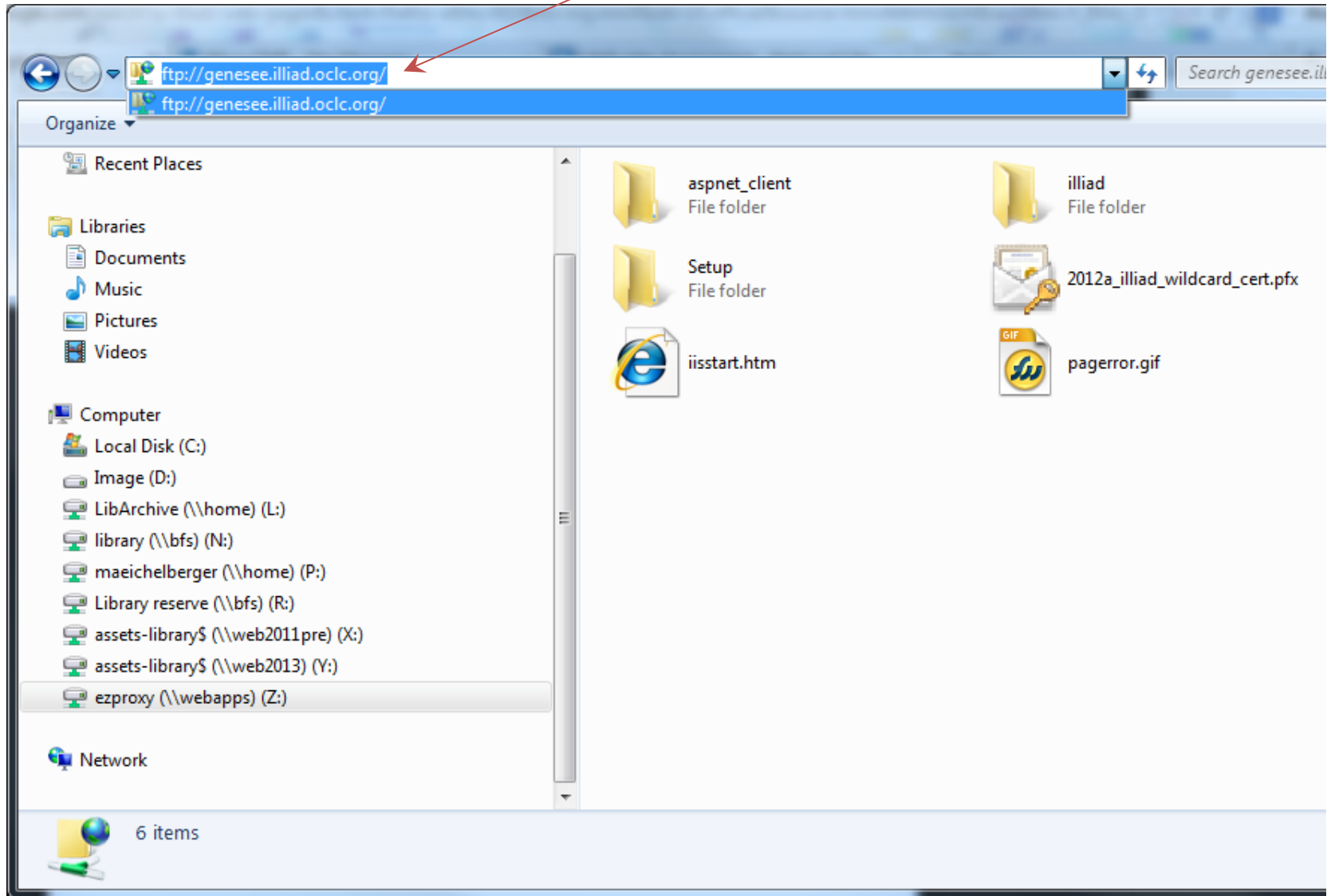


# Finding Your Webpages



Hosted Sites: go to Windows Explorer and enter your ftp address, and log in with your ftp un/pw, usually un: hosted



## **Self-Hosted Sites: Access to your webpages will live on the server which hosts it.**

- Either you or your IT staff will have access to these files.
- Best practices will limit your permission to only the files needing customization.
- In a generic install Web Pages are located:  
**[Drive Letter]:\inetpub\wwwroot\illiad**  
Where **[Drive Letter]** is the default install drive(ie C,D,etc).
- Custom installs will be located in the IIS directory for the illiad server. IT should look for the folder “ILLiad”.



# File Structure

Where to put image files  
like your college logo

Where to find delivered  
pdfs

Practice pages

Live pages

Name	Size	Type	Date modified	Date creat
CANNEDtestweb		File folder	9/6/2013 7:43 AM	9/6/2013 7
css		File folder	5/14/2013 5:41 AM	5/14/2013
Images		File folder	8/22/2011 6:46 AM	8/22/2011
js		File folder	5/14/2013 5:41 AM	5/14/2013
landing		File folder	9/6/2013 7:43 AM	9/6/2013 7
PDF		File folder	9/16/2013 1:37 PM	9/16/2013
testweb		File folder	9/6/2013 7:43 AM	9/6/2013 7
WebCirc		File folder	8/26/2013 12:38 PM	8/26/2013
WebReports		File folder	8/26/2013 12:39 PM	8/26/2013
AboutILLiad.html	1 KB	HTML Document	5/14/2013 7:25 AM	5/14/2013
ArticleRequest.html	8 KB	HTML Document	5/15/2013 8:27 AM	5/15/2013
Blocked.html	1 KB	HTML Document	5/14/2013 5:42 AM	5/14/2013
BookChapterRequest.html	10 KB	HTML Document	5/15/2013 8:33 AM	5/15/2013
ChangePassword.html	3 KB	HTML Document	5/14/2013 5:42 AM	5/14/2013
ChangeUserInformation.html	13 KB	HTML Document	5/14/2013 5:42 AM	5/14/2013
ConferencePaperRequest.html	7 KB	HTML Document	5/14/2013 5:42 AM	5/14/2013
DetailedInformation.html	2 KB	HTML Document	5/15/2013 8:38 AM	5/15/2013
DisavowedUsername.html	1 KB	HTML Document	5/14/2013 5:42 AM	5/14/2013
EditAccountInformation.html	3 KB	HTML Document	5/14/2013 5:42 AM	5/14/2013
EditArticleRequest.html	8 KB	HTML Document	5/15/2013 8:30 AM	5/15/2013
EditBookChapterRequest.html	10 KB	HTML Document	5/15/2013 8:33 AM	5/15/2013
EditConferencePaperRequest.html	7 KB	HTML Document	5/14/2013 5:42 AM	5/14/2013
EditGenericRequestAudio.html	6 KB	HTML Document	5/15/2013 8:38 AM	5/15/2013
EditGenericRequestDVDVHS.html	8 KB	HTML Document	5/15/2013 8:36 AM	5/15/2013
EditGenericRequestMicroForm.html	8 KB	HTML Document	5/15/2013 8:40 AM	5/15/2013

Two versions of many files: one for initial submission (item request, account set-up, etc.), one to edit what you submitted. If you make changes in one file, repeat changes in other one.



- New default web pages as of ILLiad v8.3
- Can get zip file from Atlas Documentation site
- Body of the files isn't much different from old files - can copy your changes over - changes are to format for better display on mobile devices



📄 13 Added by Genie Powell, last edited by Karal Gregory on Apr 10, 2013

For your convenience, below is a list of the locally installed ILLiad client executable files. This includes the ILLiad Client, Customization Manager, Staff Manager, Odyssey Helper and Odyssey Manager. All other ILLiad components are installed/updated on the ILLiad web server.

- [Updater/Installers](#)
  - [ILLiad 8.3.5.0 Client Updater](#)
  - [ILLiad 8.3.4.0 Client Updater](#)
  - [ILLiad 8.3.0.0 Client Installer](#)
- [Web Pages](#)
  - [ILLiad 8.3.0.0 Default Web Pages](#)
- [Word Templates](#)
  - [ILLiad 8.3.0.0 New Word Document Templates](#)
- [Billing Manager](#)
  - [ILLiad 8.3.0.0 Billing Manager](#)
  - [ILLiad 8.3.1.0 Billing Manager](#)
- [Database](#)
  - [ILLiad 8.1.0.0 Database Manager](#)
  - [ILLiad DOCLINE Lua Scripts](#)

# Back up and SAVE!

## More Resources:

- Handout!
- Customization Manager 501 presentation available on IDS Project Regional User Groups website.

